

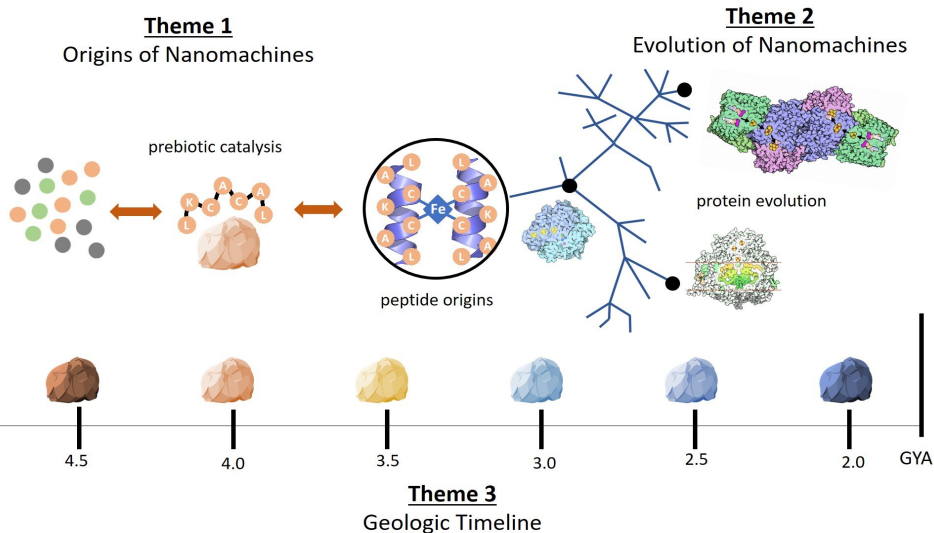
e·nig·ma

Evolution of Nanomachines In Geospheres and Microbial Ancestors

MAY 7 and 8, 2019

RUTGERS ANNUAL ENIGMA ASTROBIOLOGY SYMPOSIUM

The Enigma research team is focused on answering a single compelling question in astrobiology: **How did proteins evolve to become the predominant catalysts of life on Earth?** We seek to understand the origin of catalysis, the evolution of protein structures in microbial ancestors, and the co-evolution of proteins and the geosphere through geologic time.



Rutgers-New Brunswick
Cook Campus
Institute for Food, Nutrition,
& Health—Rm 101

Tuesday, May 7th: 8:30am
to 4:30pm

Wednesday, May 8th:
9:00am to 2:30pm

Learn more about at:
enigma.rutgers.edu

Registration required. Please contact
Beatrice Birrer at bea@marine.rutgers.edu.

